

Appendix F

Air Quality Monitoring Results and their Graphical Presentation

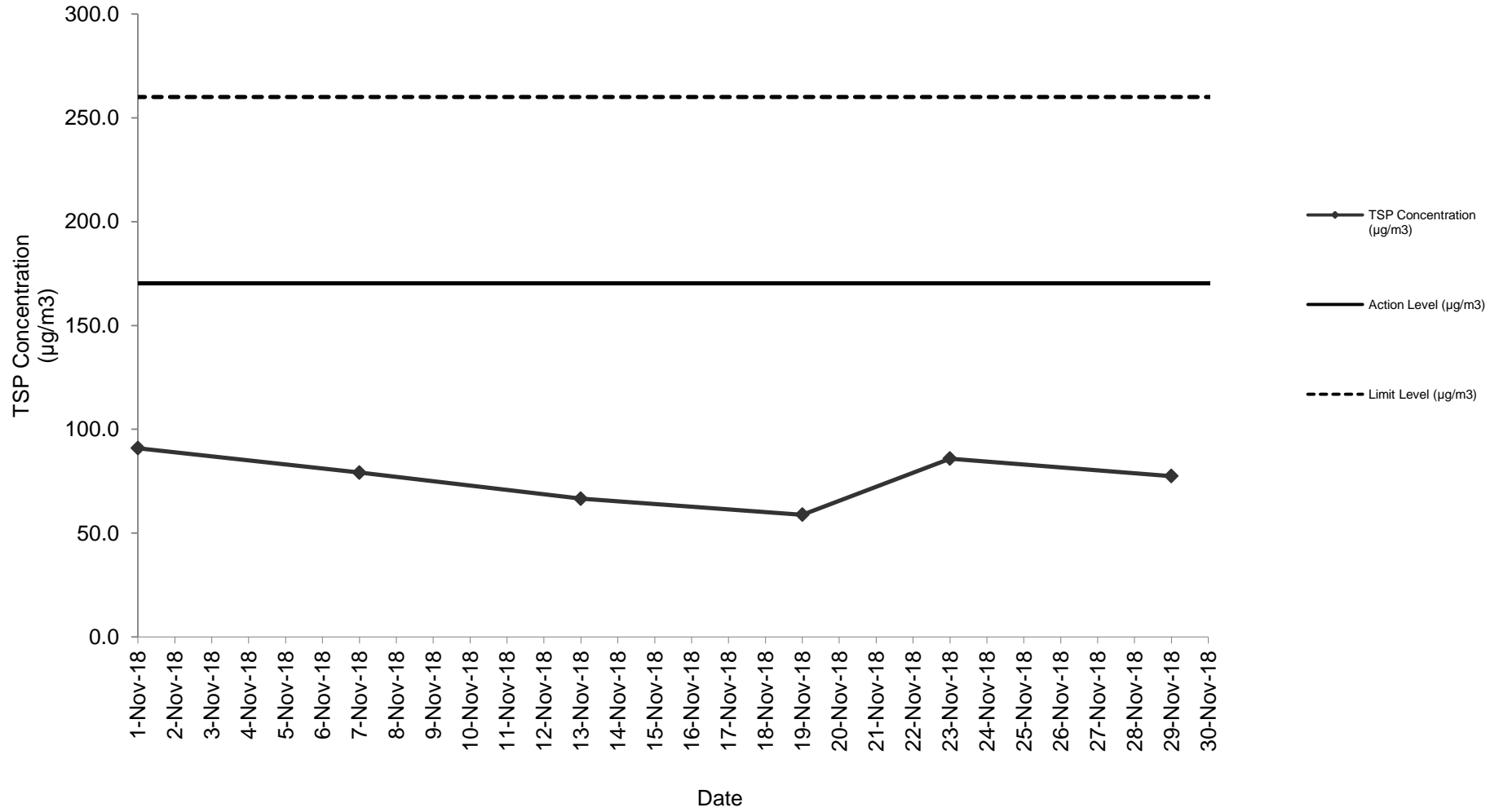
Appendix F
Air Quality Monitoring Results and their Graphical Presentation

24-Hour TSP Monitoring Result at Station: SR77

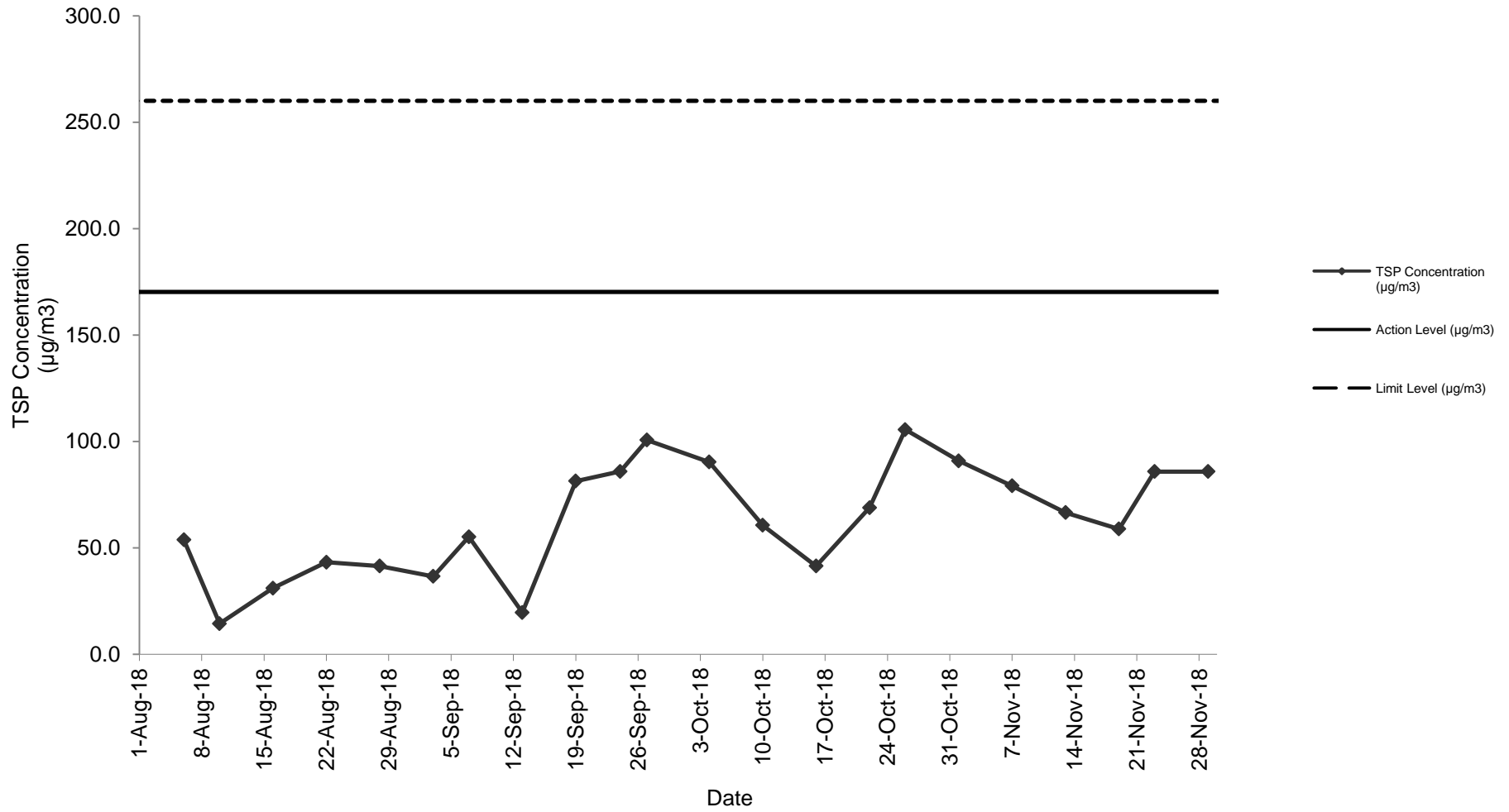
Sampling Date	Weather Condition	Starting Time	Paper No.	Wt. of paper (g)			Elapse Time			Flow Rate (CFM)			Flow Rate (m ³ /min)			Total Volume (m ³)	TSP Concentration (µg/m ³)	Action Level (µg/m ³)	Limit Level (µg/m ³)	Wind speed m/s	Wind direction	NOE	IR
				Initial Wt.	Final Wt.	Wt. of Dust	Initial	Final	Sampling Hour	Initial	Final	Avg Flow Rate	Initial	Final	Avg Flow Rate								
1-Nov-18	Fine	12:11	C192	2.6600	2.8491	0.1891	9117.67	9141.67	24.00	51	51	51.0	1.44	1.44	1.44	2079.59	90.9	170.3	260.0	<5	N		
7-Nov-18	Sunny	12:13	C194	2.6632	2.8278	0.1646	9144.67	9168.67	24.00	51	51	51.0	1.44	1.44	1.44	2079.59	79.2	170.3	260.0	<5	N		
13-Nov-18	Fine	12:12	C196	2.6541	2.7926	0.1385	9171.67	9195.67	24.00	51	51	51.0	1.44	1.44	1.44	2079.59	66.6	170.3	260.0	<5	N		
19-Nov-18	Sunny	12:13	C198	2.6760	2.7984	0.1224	9198.67	9222.67	24.00	51	51	51.0	1.44	1.44	1.44	2079.59	58.9	170.3	260.0	<6	N		
23-Nov-18	Fine	12:12	C200	2.6627	2.8413	0.1786	9225.67	9249.67	24.00	51	51	51.0	1.44	1.44	1.44	2079.59	85.9	170.3	260.0	<7	N		
29-Nov-18	Sunny	12:14	C202	2.6711	2.8322	0.1611	9252.67	9276.67	24.00	51	51	51.0	1.44	1.44	1.44	2079.59	77.5	170.3	260.0	<8	N		
																Average	76.5						
																Min	58.9						
																Max	90.9						

Note: No major dust source observed during the monitoring period
 Data in **Bold** denotes exceedance of respective Action Level
 Data in **Bold Underline** denotes exceedance of respective Limit Level

24-Hour TSP Monitoring Result at Station: SR77



24-Hour TSP Monitoring Result at Station: SR77 (August 2018 - November 2018)



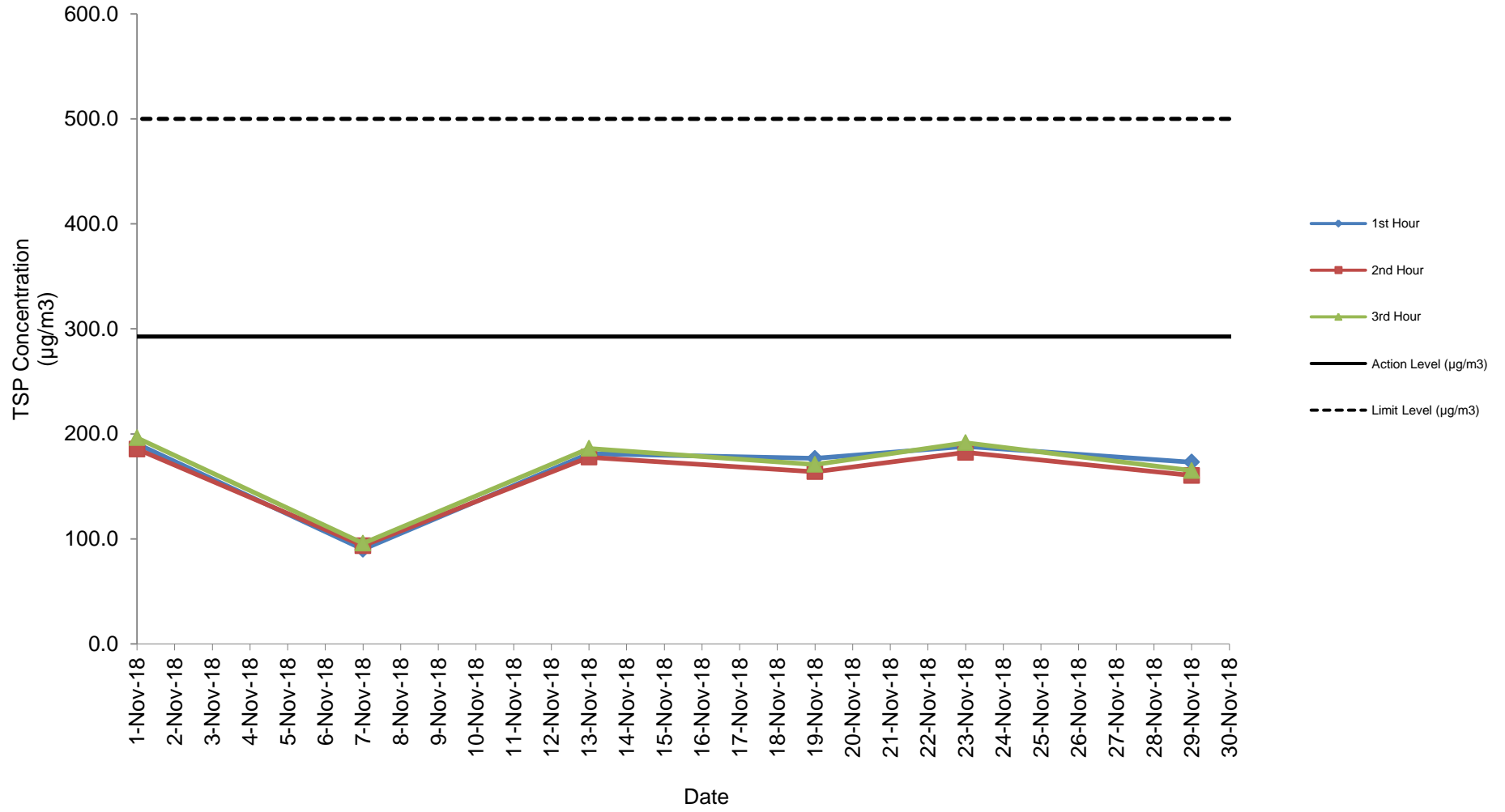
Appendix F
Air Quality Monitoring Results and their Graphical Presentation

Detailed Calculation of 1-Hour TSP Monitoring Result at Station: SR77

Sampling Date	Weather Condition	Starting Time	Paper No.	Wt. of paper (g)			Elapse Time			Flow Rate (CFM)			Flow Rate (m ³ /min)			Total Volume (m ³)	TSP Concentration (µg/m ³)	Action Level (µg/m ³)	Limit Level (µg/m ³)	Wind speed m/s	Wind direction	NOE	IR
				Initial Wt.	Final Wt.	Wt. of Dust	Initial	Final	Sampling Hour	Initial	Final	Avg Flow Rate	Initial	Final	Avg Flow Rate								
1-Nov-18	Fine	09:00	C193A	2.6665	2.6811	0.0146	8979.67	8980.67	1.00	51	51	51.0	1.44	1.44	1.44	86.65	190.4	292.7	500.0	<5	N		
	Fine	10:04	C193B	2.6519	2.6672	0.0153	8980.67	8981.67	1.00	51	51	51.0	1.44	1.44	1.44	86.65	185.8	292.7	500.0	<5	N		
	Fine	11:08	C193C	2.6411	2.6554	0.0143	8981.67	8982.67	1.00	51	51	51.0	1.44	1.44	1.44	86.65	196.2	292.7	500.0	<5	N		
7-Nov-18	Sunny	09:00	C195A	2.6729	2.6850	0.0121	9006.67	9007.67	1.00	51	51	51.0	1.44	1.44	1.44	86.65	90.0	292.7	500.0	<5	N		
	Sunny	10:04	C195B	2.6708	2.6846	0.0138	9007.67	9008.67	1.00	51	51	51.0	1.44	1.44	1.44	86.65	93.5	292.7	500.0	<5	N		
	Sunny	11:10	C195C	2.6649	2.6774	0.0125	9008.67	9009.67	1.00	51	51	51.0	1.44	1.44	1.44	86.65	95.8	292.7	500.0	<5	N		
13-Nov-18	Fine	09:00	C197A	2.6631	2.6724	0.0093	9033.67	9034.67	1.00	51	51	51.0	1.44	1.44	1.44	86.65	181.2	292.7	500.0	<5	N		
	Fine	10:05	C197B	2.6748	2.6838	0.0090	9034.67	9035.67	1.00	51	51	51.0	1.44	1.44	1.44	86.65	177.7	292.7	500.0	<5	N		
	Fine	11:08	C197C	2.6681	2.6764	0.0083	9035.67	9036.67	1.00	51	51	51.0	1.44	1.44	1.44	86.65	186.2	292.7	500.0	<5	N		
19-Nov-18	Sunny	09:00	C199A	2.6694	2.6781	0.0087	9060.67	9061.67	1.00	51	51	51.0	1.44	1.44	1.44	86.65	176.6	292.7	500.0	<5	N		
	Sunny	10:03	C199B	2.6711	2.6802	0.0091	9061.67	9062.67	1.00	51	51	51.0	1.44	1.44	1.44	86.65	163.9	292.7	500.0	<5	N		
	Sunny	11:11	C199C	2.6675	2.6764	0.0089	9062.67	9063.67	1.00	51	51	51.0	1.44	1.44	1.44	86.65	170.8	292.7	500.0	<5	N		
23-Nov-18	Fine	09:00	C201A	2.6844	2.6922	0.0078	9087.67	9088.67	1.00	51	51	51.0	1.44	1.44	1.44	86.65	188.1	292.7	500.0	<5	N		
	Fine	10:03	C201B	2.6893	2.6981	0.0088	9088.67	9089.67	1.00	51	51	51.0	1.44	1.44	1.44	86.65	182.3	292.7	500.0	<5	N		
	Fine	11:09	C201C	2.6591	2.6684	0.0093	9089.67	9090.67	1.00	51	51	51.0	1.44	1.44	1.44	86.65	191.6	292.7	500.0	<5	N		
29-Nov-18	Sunny	09:00	C203A	2.6711	2.6861	0.0150	9249.67	9250.67	1.00	51	51	51.0	1.44	1.44	1.44	86.65	173.1	292.7	500.0	<5	N		
	Sunny	10:04	C203B	2.6683	2.6822	0.0139	9250.67	9251.67	1.00	51	51	51.0	1.44	1.44	1.44	86.65	160.4	292.7	500.0	<5	N		
	Sunny	11:10	C203C	2.6618	2.6761	0.0143	9251.67	9252.67	1.00	51	51	51.0	1.44	1.44	1.44	86.65	165.0	292.7	500.0	<5	N		
																Average	164.9						
																Min	90.0						
																Max	196.2						

Note: No major dust source observed during the monitoring period
Data in **Bold** denotes exceedance of respective Action Level
Data in **Bold Underline** denotes exceedance of respective Limit Level

1-Hour TSP Monitoring Result at station: SR77



1-Hour TSP Monitoring Result at station: SR77 (August 2018 - November 2018)

