

# **Appendix H**

## **Noise Monitoring Results and their Graphical Presentation**

**Appendix H**  
**Noise Monitoring Results and their Graphical Presentation**

Noise Monitoring Result at SR77

Date	Weather Condition	Start Time	End Time	Measured Noise Level (dB(A))*			Baseline Corrected Level, dB(A)**	Baseline Noise Level (dB(A)), Leq(30min)	Limit Level dB(A)
				L10(30min)	L90(30min)	Leq(30min)			
2018-11-01	Fine	11:30	12:00	79.0	66.0	71.0	-	67.8	75.0
2018-11-07	Sunny	11:30	12:00	69.5	51.5	65.5	-	67.8	75.0
2018-11-13	Fine	11:30	12:00	70.0	54.0	65.0	-	67.8	75.0
2018-11-19	Sunny	11:15	23:45	74.0	59.0	66.5	-	67.8	75.0
2018-11-29	Sunny	11:30	12:00	71.0	56.0	64.5	-	67.8	75.0
						<b>Average</b>	66.5		
						<b>Minimum</b>	64.5		
						<b>Maximum</b>	71.0		

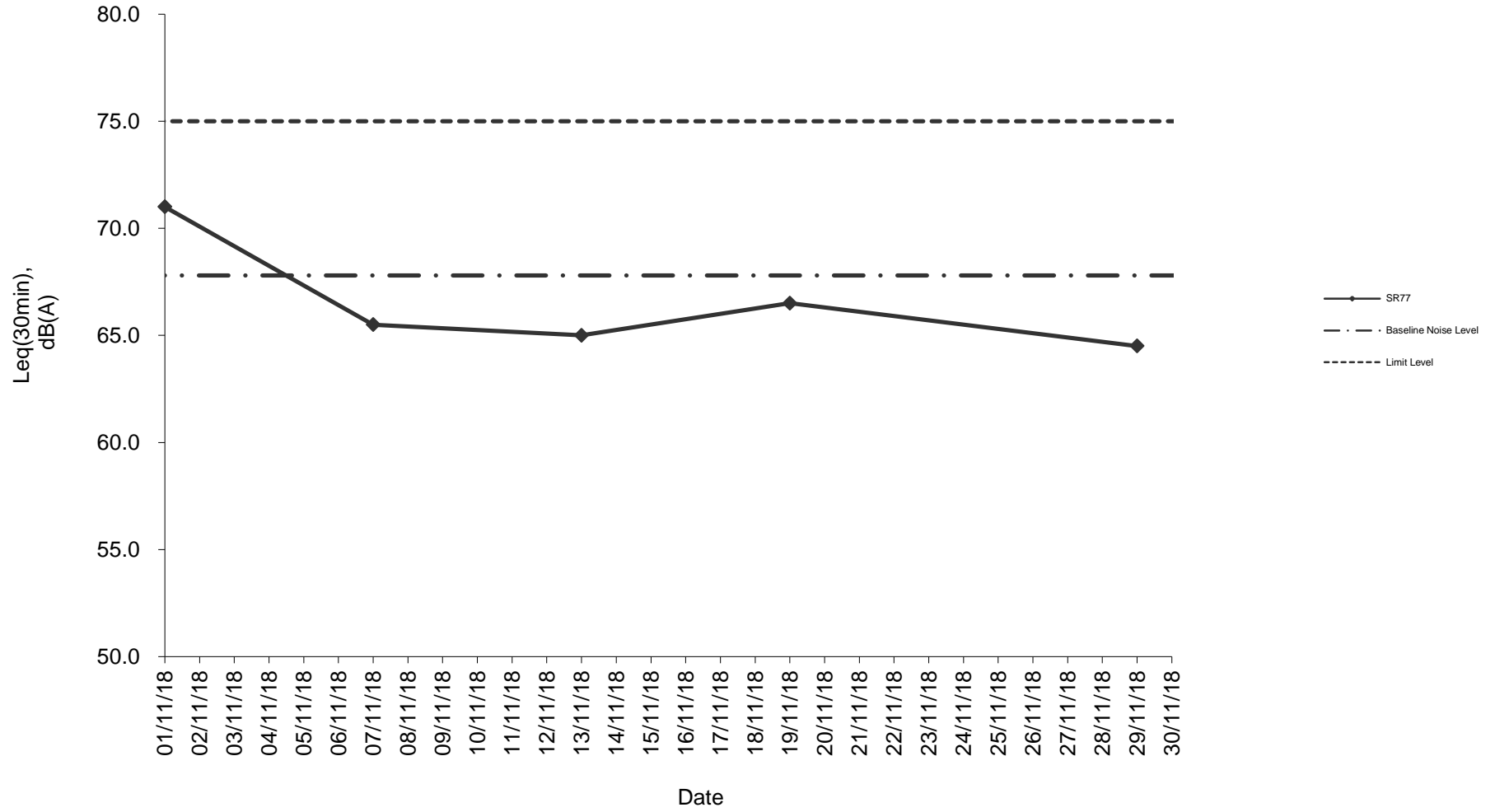
**Remarks**

\* +3dB(A) Façade effect correction included

\*\* Baseline corrected level is only calculated when measured noise level (Leq) > limit level.

\*\*\* Data in **79.0** denotes exceedance of respective Limit Level

### Noise monitoring result: SR77



**Noise monitoring result: SR77  
(August 2018 - November 2018)**

